



American Recovery and Reinvestment Act

Stabilization Funds
National
\$53.6 Billion

Increases to
Formula Grants
\$104,426,900

Education
Secretary's
Portion National
\$5 Billion

Governor's
Portion
\$246,577,000

- Competitive Grant Applications
- Based on how well the state has used the Governor's Portion of the Stabilization Funds

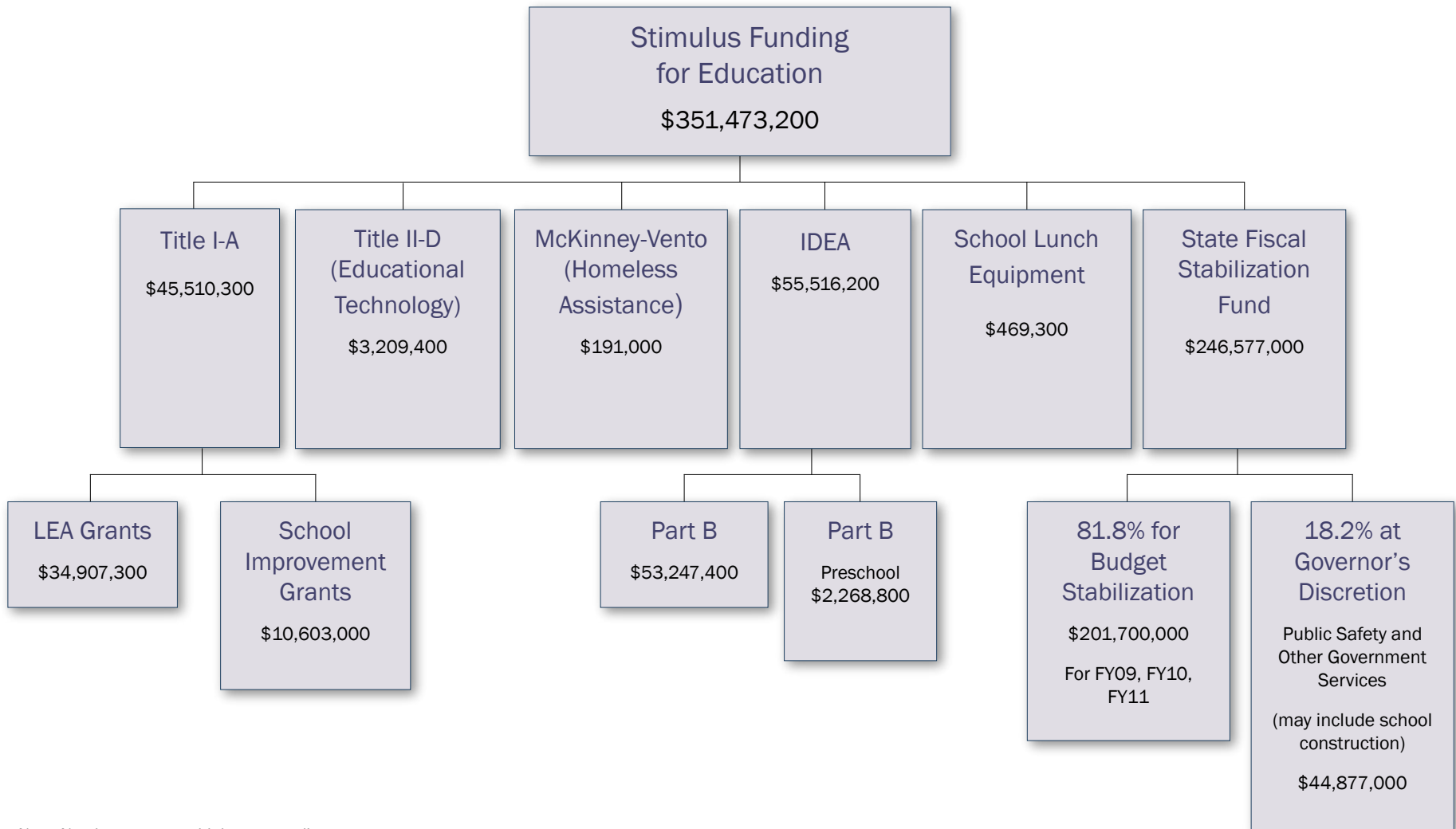
18.2%

- Used for Public Safety Initiatives – can be used for education
- Est. \$44,877,000

81.8%

- Distributed between K-12 and Higher Education to cover budget shortfalls
- Based on State Funding Formulas
- Est. \$201,700,000

- Title I-A Grant to LEAS: \$34,907,300
- Title I School Improvement Grants \$10,603,000
- Innovative Programs Grants
- Educational Technology Grant \$3,209,400
- Homeless Grant \$191,000
- IDEA Part B \$53,247,400
- IDEA Part B preschool \$2,268,800



Note: Number may not add due to rounding.



- – Federal Stimulus Dollars
- – Budget Reduction
- – General Fund Dollars
- – Public Education Stabilization Fund

Budget Stabilization
\$201,700,000

Public Schools Share
\$165,443,700

Postsecondary & PTE Education Share
\$36,256,300

FY09
\$85,097,600

Cover 6% budget Shortfall
\$85,097,600

PESF
\$114,000,000

FY10
\$47,352,900

Cover JFAC's Feb. 13th proposed 5% cuts to personnel cost \$47,352,900

Reduce ongoing FY10 appropriation = (\$62,129,900)

Fund growth with General Fund \$20,900,000

PESF
\$114,000,000

FY11
\$32,993,200

Cover JFAC's Feb. 13th proposed 5% cuts to personnel cost \$47,352,900

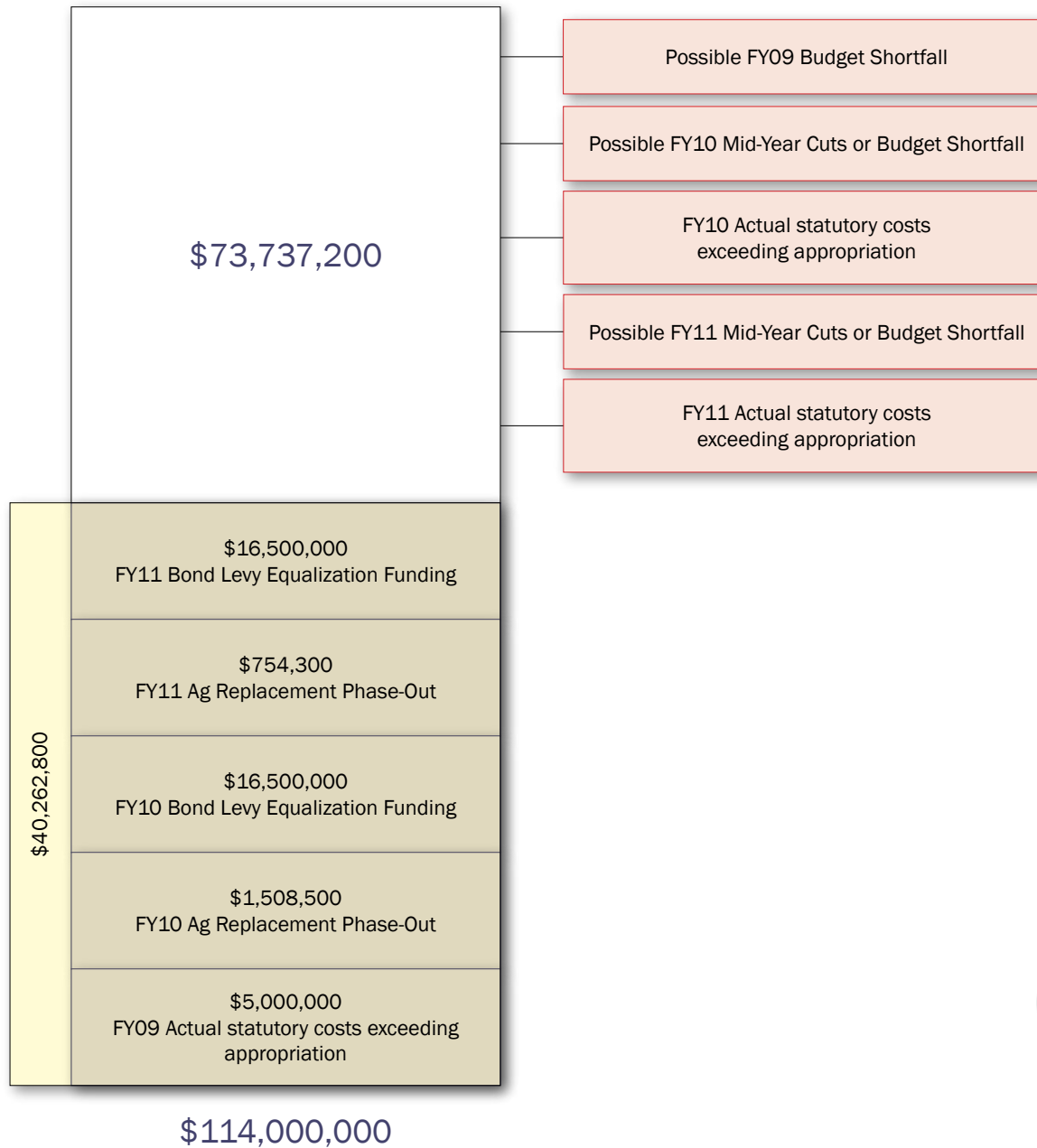
Reduce ongoing FY10 appropriation = (\$62,129,900)

Fund growth with Federal Stimulus Dollars \$20,900,000

New General Fund needed after stimulus is exhausted \$35,259,700

PESF
\$114,000,000

* Updated March 4, 2009 based on LSO data



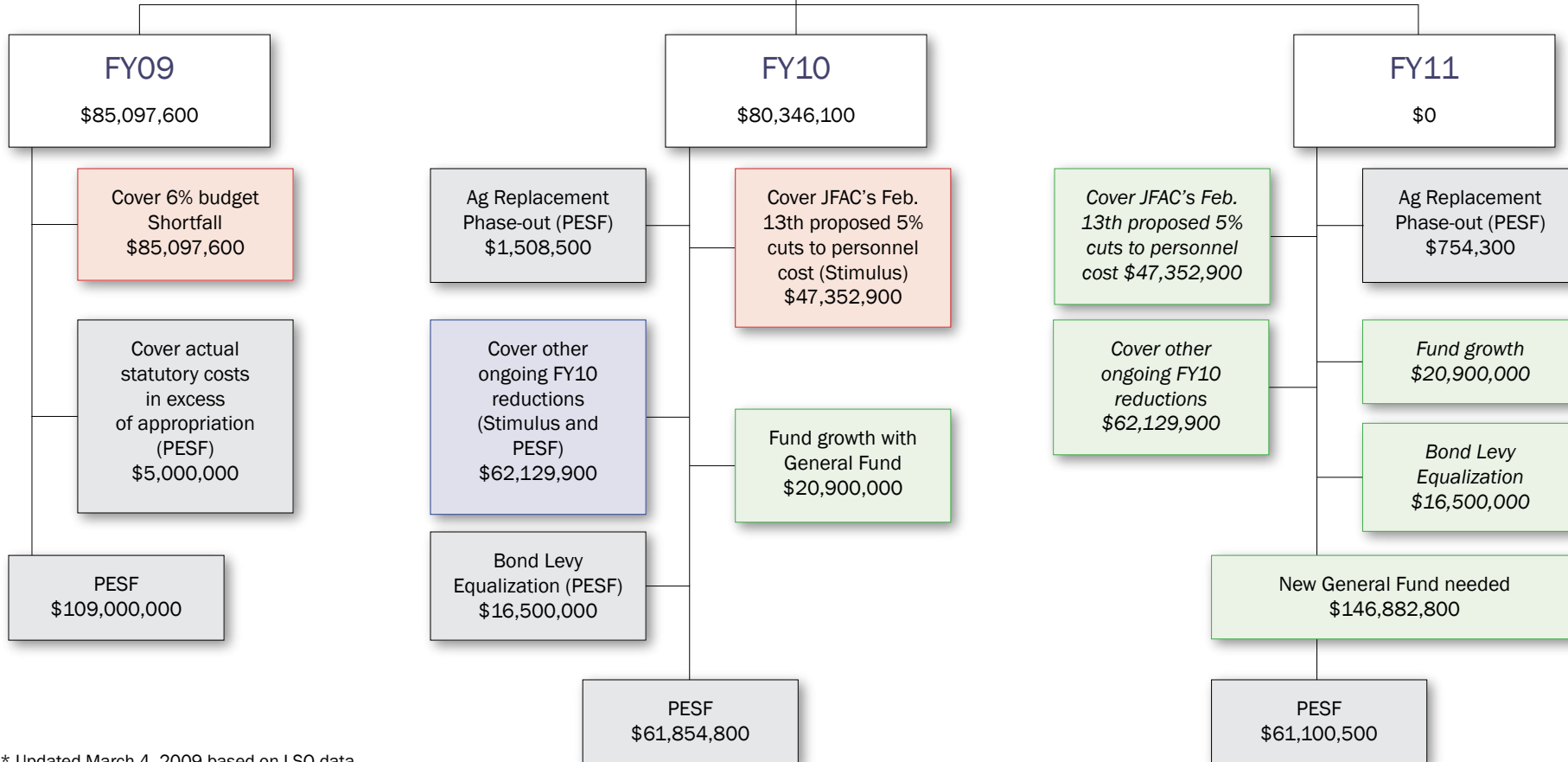


- – Federal Stimulus Dollars
- – Budget Reduction
- – General Fund Dollars
- – Public Education Stabilization Fund

Budget Stabilization
\$201,700,000

Public Schools Share
\$165,443,700

Postsecondary & PTE Education Share
\$36,256,300



* Updated March 4, 2009 based on LSO data