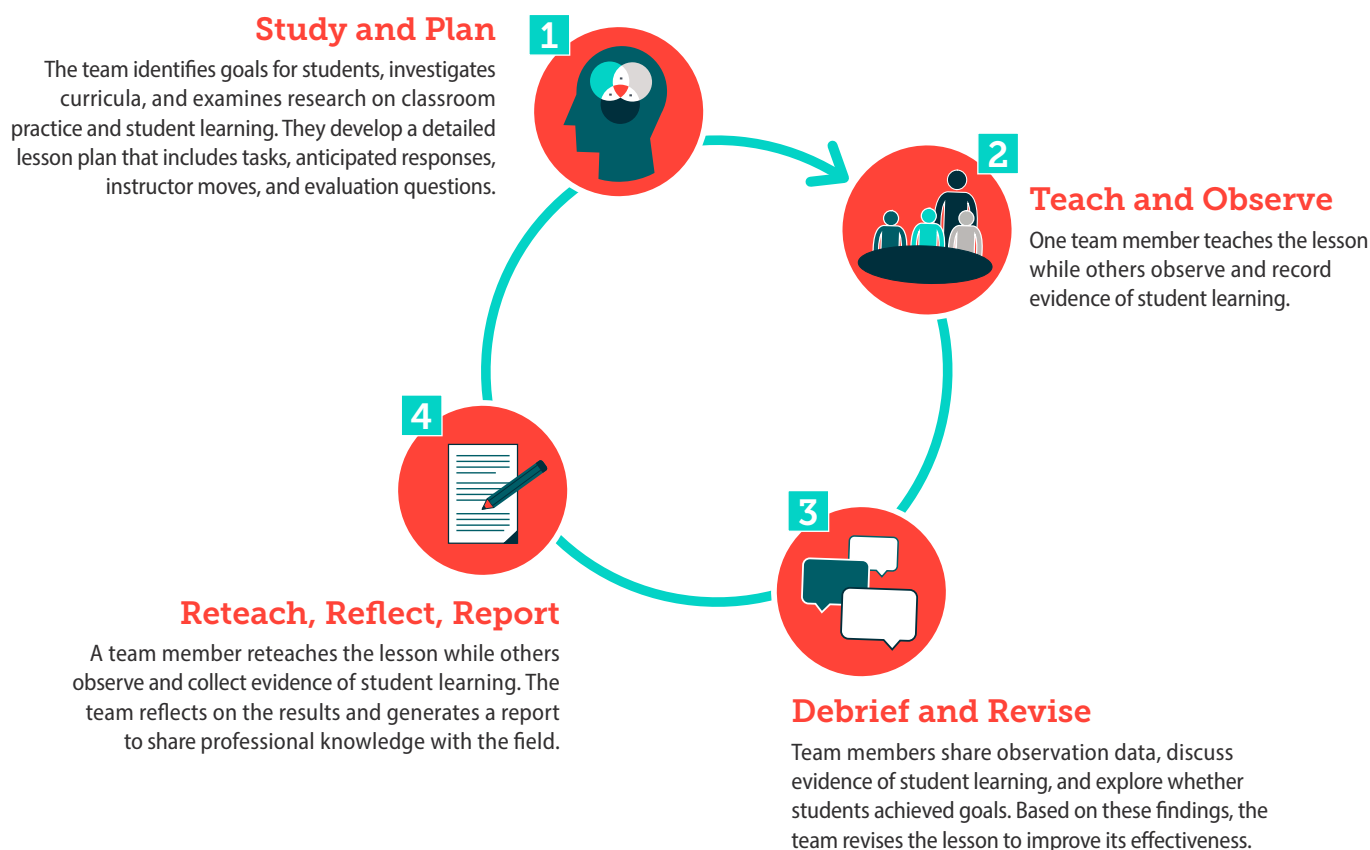


Lesson Study

Lesson Study is a collaborative professional development approach focused on student learning. The Lesson Study Cycle is comprised of four stages. Typically, teams complete one or two cycles each academic year. Attention to the three Lesson Study Implementation Practices helps teams build capacity to understand student learning and make meaningful changes to their teaching practice.

Lesson Study Cycle



Implementation Practices



DEVELOP AND SUSTAIN A COLLABORATIVE TEAM

- Establish purpose and long-term goals
- Articulate and attend to collaboration norms
- Maintain an inquiry focus on student learning



STUDY RESEARCH AND APPLY EVIDENCE-BASED PRACTICES

- Explore research literature on student development of mathematical understanding
- Investigate evidence-based instructional approaches and practices



GENERATE AND SHARE PROFESSIONAL KNOWLEDGE

- Synthesize and document lessons learned
- Consider broader application for teaching practice
- Share knowledge with the field