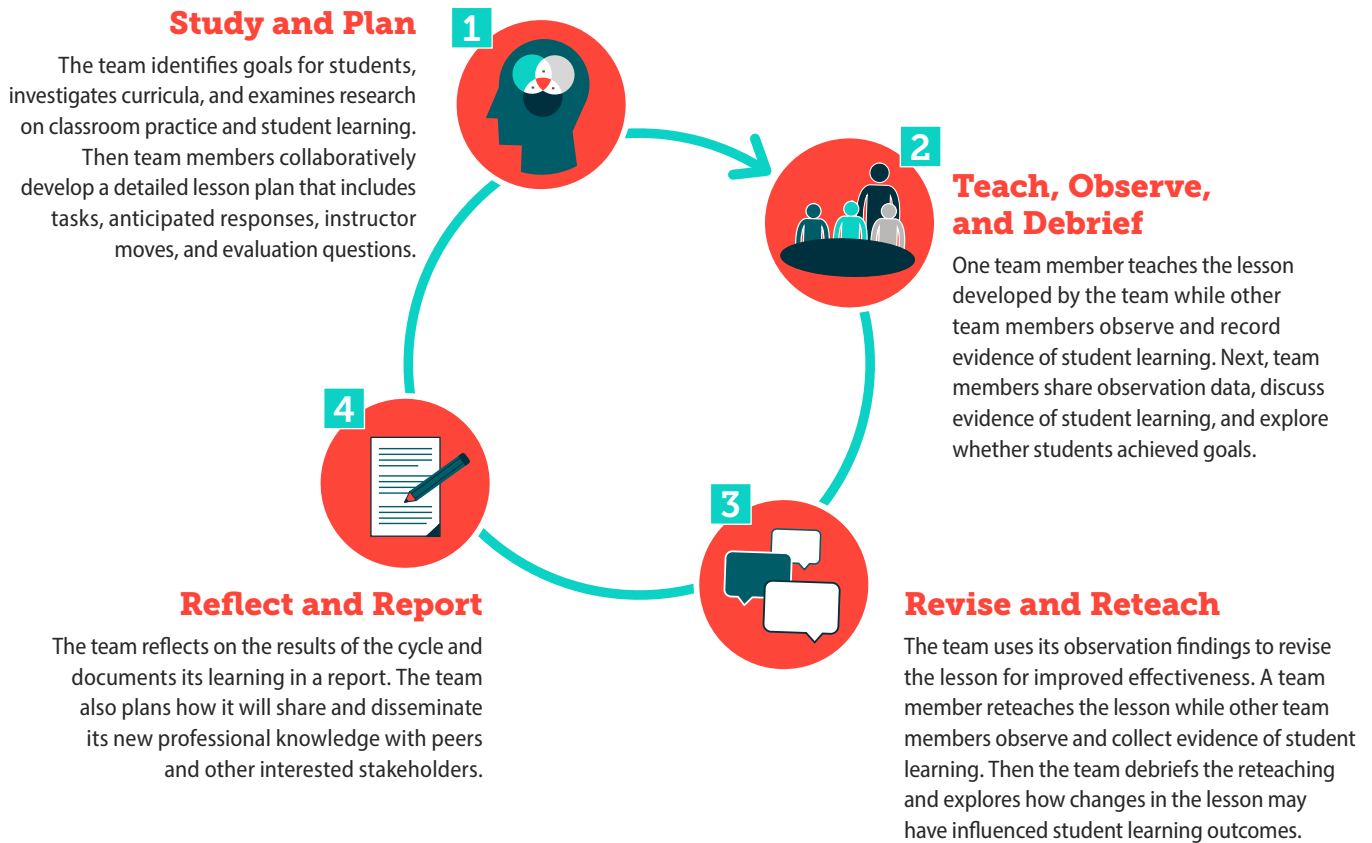


# Lesson Study

Lesson Study is a collaborative professional development approach focused on student learning. The Lesson Study Cycle is comprised of four stages. Typically, teams complete one or two cycles each academic year. Attention to the three Lesson Study Implementation Practices helps teams build capacity to understand student learning and make meaningful changes to their teaching practice.

## Lesson Study Cycle



## Implementation Practices



### DEVELOP AND SUSTAIN A COLLABORATIVE TEAM

- Establish purpose and long-term goals
- Articulate and attend to collaboration norms
- Maintain an inquiry focus on student learning



### STUDY RESEARCH AND APPLY EVIDENCE-BASED PRACTICES

- Explore research literature on learning theory.
- Investigate evidence-based instructional approaches and practices



### GENERATE AND SHARE PROFESSIONAL KNOWLEDGE

- Synthesize and document lessons learned
- Consider broader application for teaching practice
- Share knowledge with the field