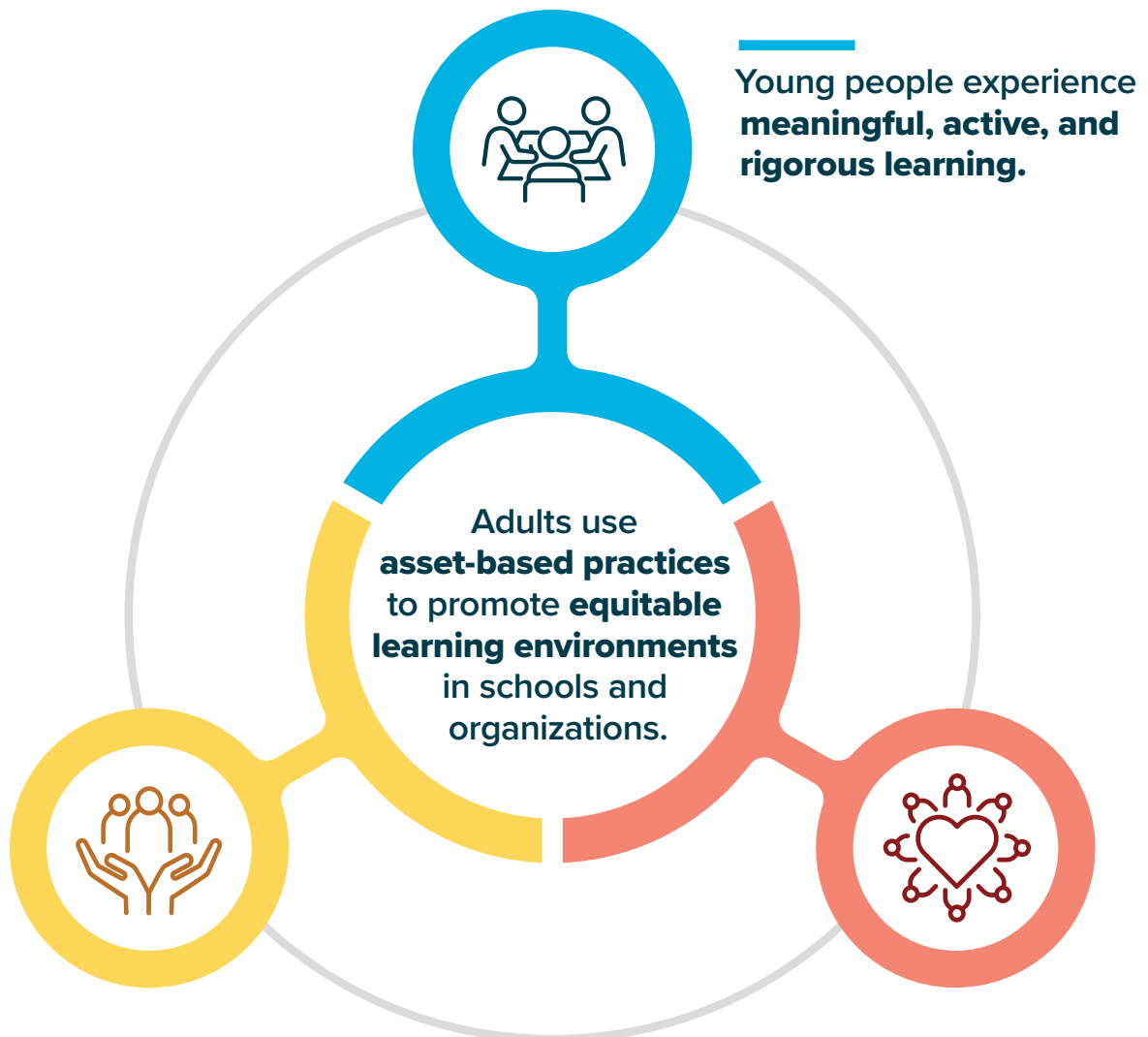


Equitable learning environments framework

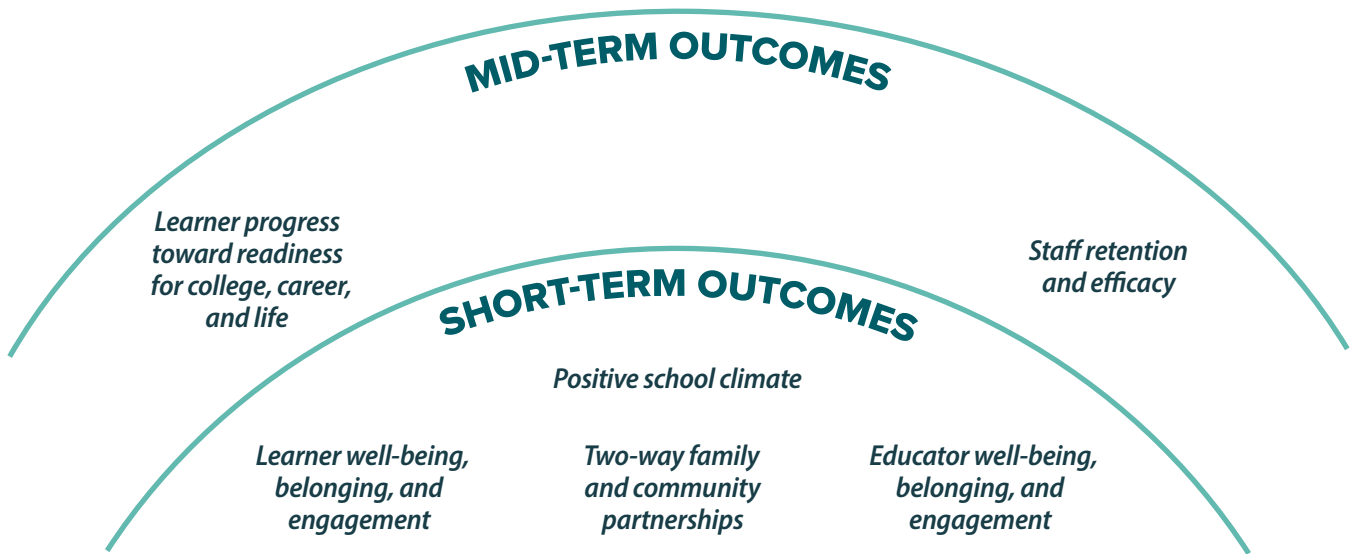
What do equitable learning environments look like?



Young people experience **positive relationships** with diverse peers and adults.

Young people experience a **sense of belonging** because they feel affirmed in their identity and ability.

Equitable learning environments theory of action



When adults have **supportive systems and community collaboration**, they will use **asset-based practices** to promote **equitable learning environments** where **young people** experience:

